

The Bike Room | 1109 W. North Shore Ave | Chicago, IL 60626 | CTA: red line, Loyola  
Artists Panel | Latitude Chicago | 1821 West Hubbard Street, Suite 207, Chicago, IL 60622

## For Immediate Release

### PRO BIAS (*probing bias*)

Works by Cudelice Brazelton, Zoe Berg, Tal Nisim and Sanaz Sohrabi

Opening Reception

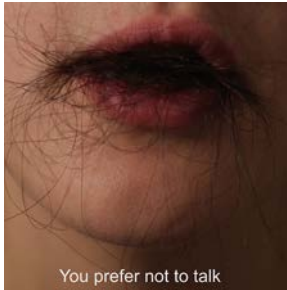
Artist Panel Discussion at Latitude Chicago

Show Run

July 11, 5-8pm

July 9, 6:30-7:30

July 11-August 15, 2015



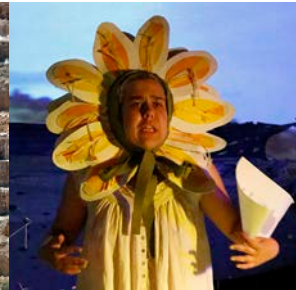
Sanaz Sohrabi



Cudelice Brazelton



Tal Nisim



Zoe Berg

The Bike Room is pleased to present PRO BIAS (*probing bias*), which examines the role and relevance of identity in context of the global art landscape. PRO BIAS resists the persuasion of Globalism's homogeneity, reevaluating the unassimilated stance. With Identity Politics c.1970s forty years past supplanted by social practices and worldwide art connectivity, what does identity look like?

**Cudelice Brazelton** (Columbus, Ohio) explores issues of race and class, often appraising stereotypes of *hyper-black masculinity*. Cofounder of M I N T, an artist-run project space housed in a former meatpacking plant, Brazelton harvests factory-salvaged dirt and detritus to stamp his art objects with a laborer's hand.

**Zoe Berg** (Denton, Texas) elaborates homespun myths through performance, video, props and installation. Like a ventriloquist she channels the voices of multiple characters, ranging from her Norwegian grandfather to a flower troll baby deity. Berg accesses pop culture, Scandinavian folklore and family histories to inform her abundant, idiosyncratic narratives.

**Tal Nisim** (Tel Aviv, Israel) both honors and undermines nostalgic associations with Israeli terrain. His image manipulations include enacting violence upon his equipment; he kicks and smashes photographic lenses, dismembers printers and fastens video cameras to beating metronomes. Nisim overhauls documental fidelity by challenging staid constructs of landscape and recorded histories, and the politics inherent within.

**Sanaz Sohrabi** (Chicago, IL) elucidates still and motion images that emerge and recede like memories. We recognize political events whose details elude us – Sohrabi's reenactments are fictions. Choreographed emancipatory movements gather force toward unimagined destinies; assembled bodies coalesce and fall apart. The displaced Self redefines its confines within ever changing environments.

The artists in this exhibition were selected from the 2014 ACRE Residency Program.

**Please join the artists and curator in a roundtable discussion at Latitude | 7/9/15 | 6:30-7:30**

The Bike Room is an artist-run project space in East Rogers Park, Chicago, and an ACRE partner gallery. For information or appointments, please contact: Nancy Lu Rosenheim  
[nancy@nancylurosenheim.com](mailto:nancy@nancylurosenheim.com) (773) 329-7879  
<http://nancylurosenheim.com/the-bike-room/PRO-BIAS/>